

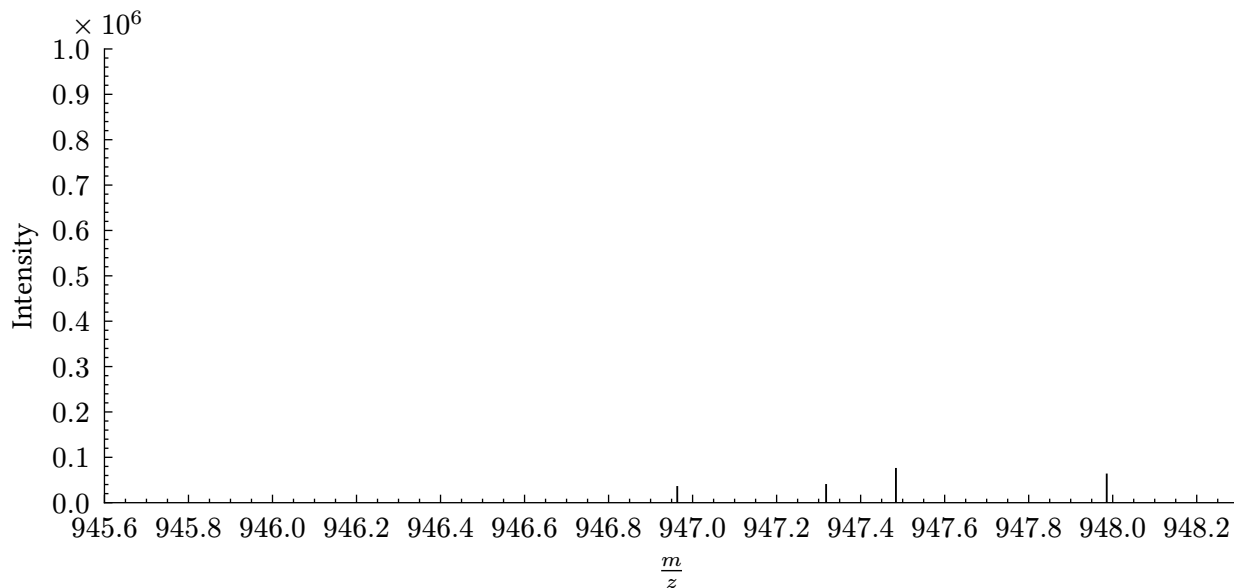
## MS1 ref A 947.48401

MS level 1

index 101726

native id controllerType=0 controllerNumber=1 scan=101727

retention time 2883.3 seconds (48.06 minutes)



## MS2 precursor m/z target A: 947.48401

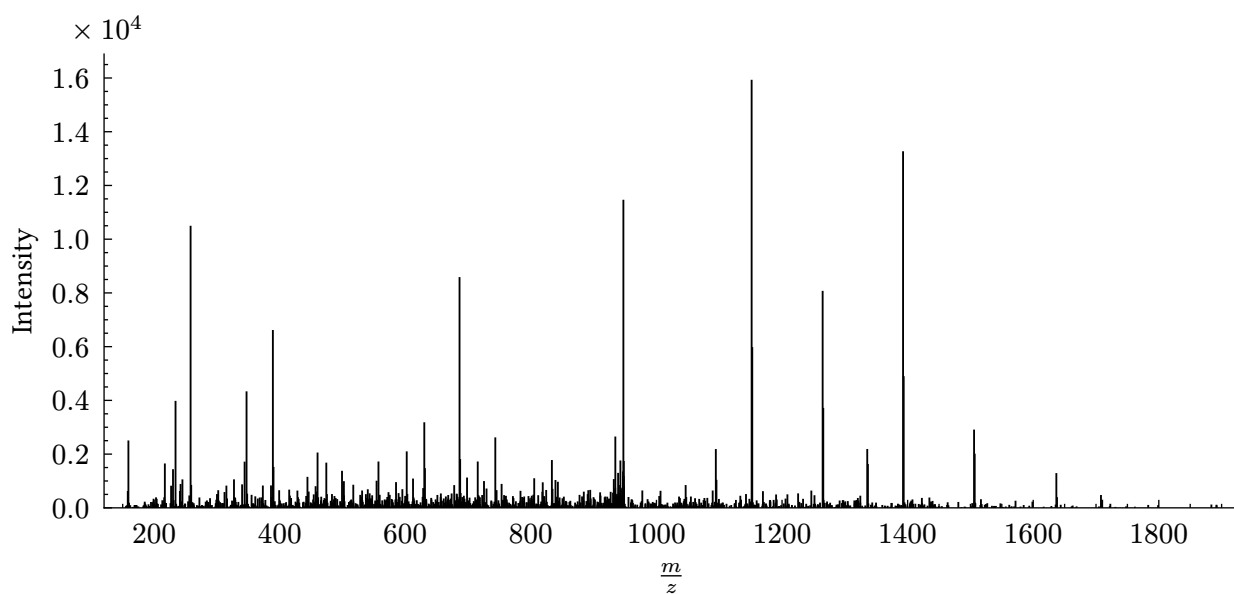
MS level 2

index 101765

native id controllerType=0 controllerNumber=1 scan=101766

retention time 2884.35 seconds (48.07 minutes)

isolation window target m/z 947.48401  $\pm$  0.75 [946.734 - 948.234]



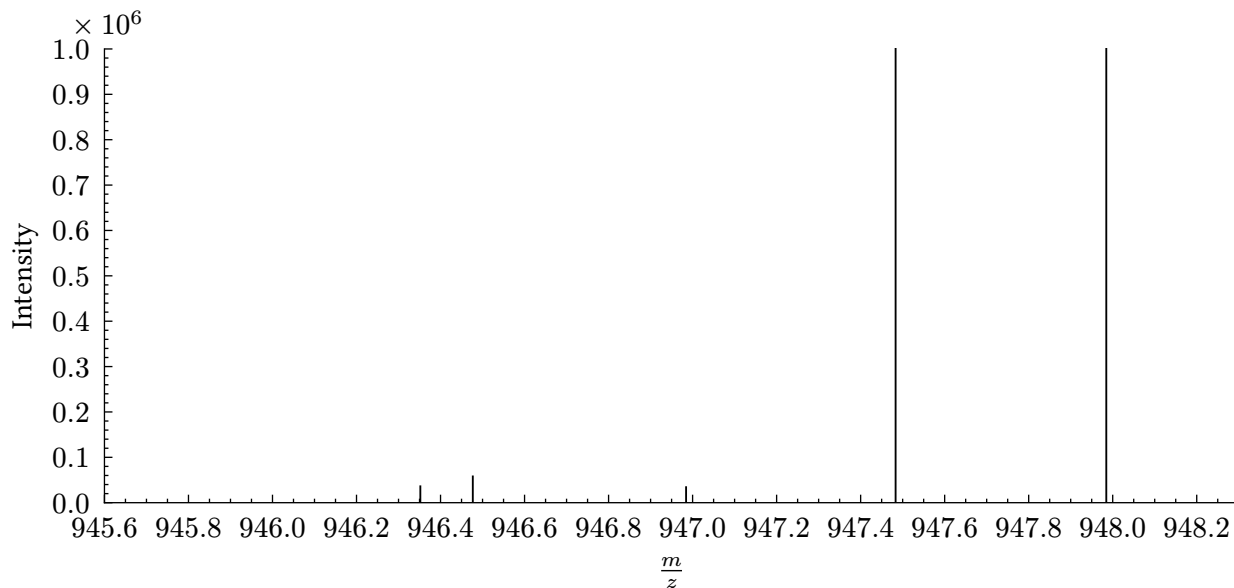
## MS1 ref B 946.47681

MS level 1

index 101836

native id controllerType=0 controllerNumber=1 scan=101837

retention time 2886.63 seconds (48.11 minutes)



## MS2 precursor m/z target B: 946.47681

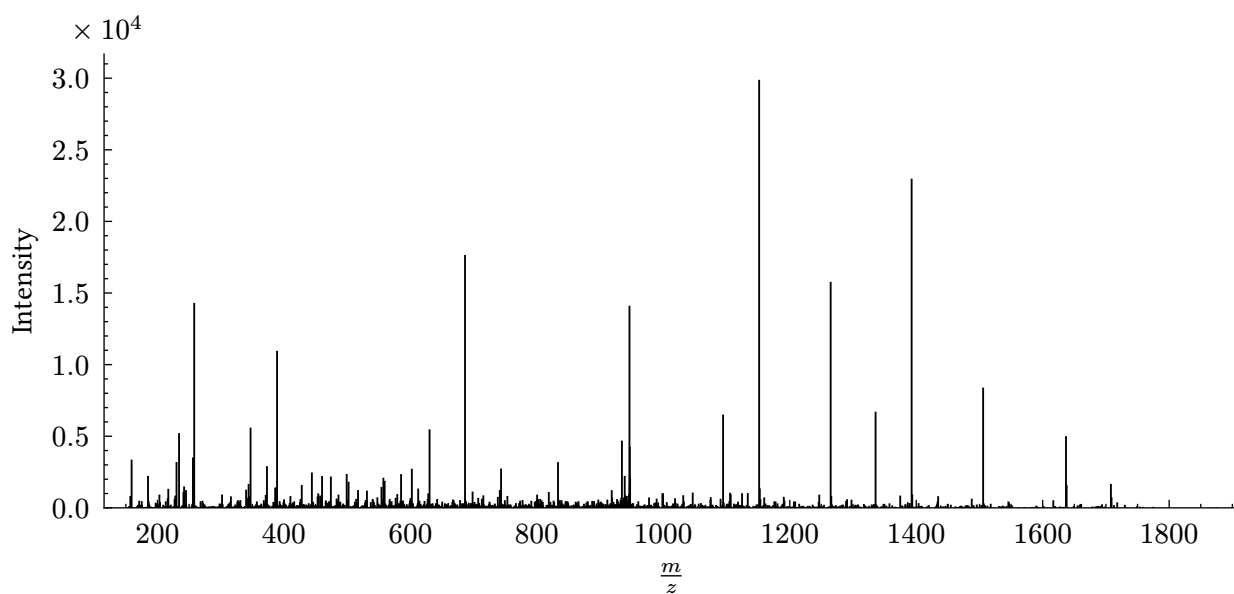
MS level 2

index 101895

native id controllerType=0 controllerNumber=1 scan=101896

retention time 2888.15 seconds (48.14 minutes)

isolation window target m/z 946.47681  $\pm$  0.75 [945.7268 - 947.2268]



## Compar MS2

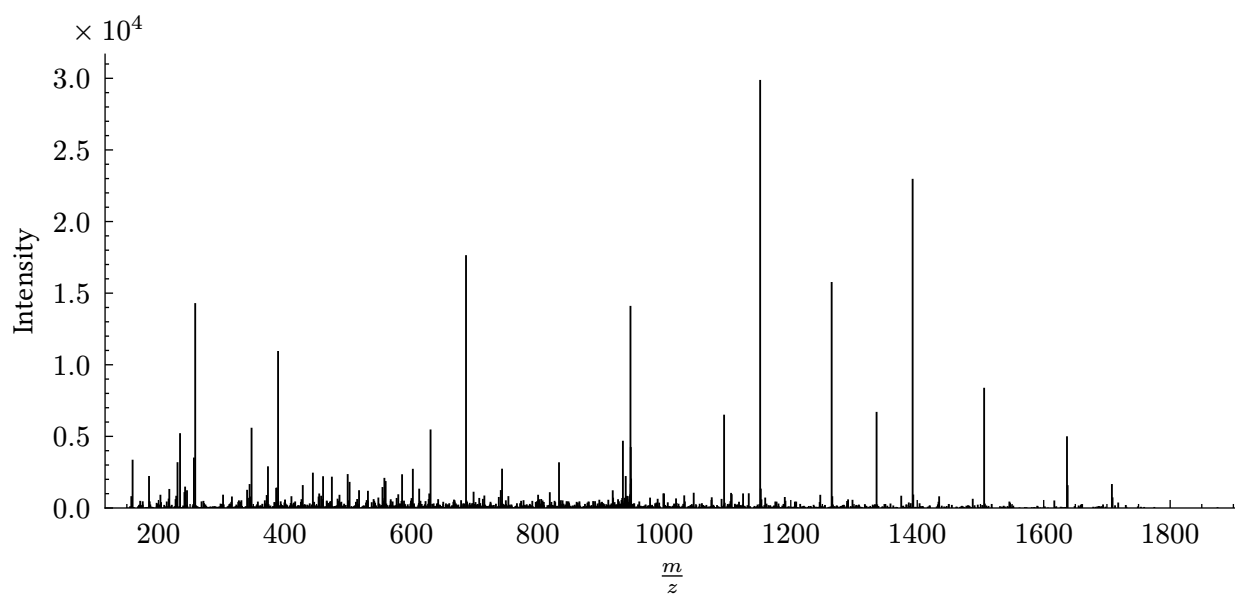
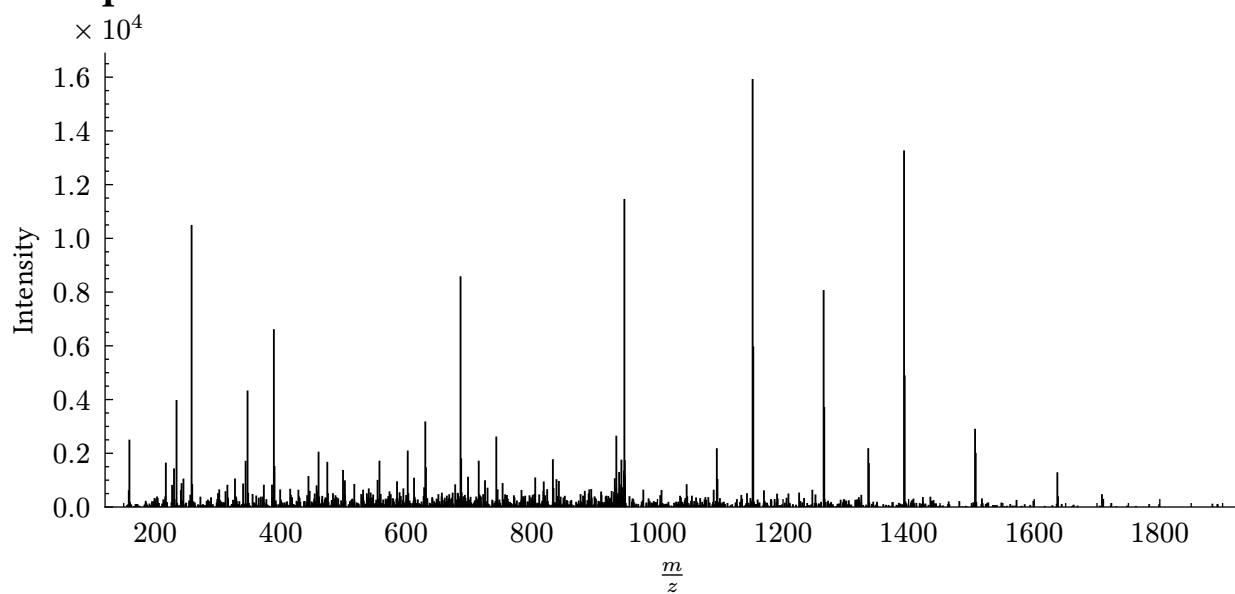


Figure 1 shows a mass spectrum plot of Intensity versus  $m/z$ . The x-axis ranges from 1140 to 1160  $m/z$ , and the y-axis ranges from 0.0 to 1.6  $\times 10^4$ . The base peak is at  $m/z$  1151.5 with an intensity of approximately 1.6  $\times 10^4$ . Other significant peaks are at  $m/z$  1142.5 (intensity  $\sim 0.05 \times 10^4$ ) and  $m/z$  1152.5 (intensity  $\sim 0.6 \times 10^4$ ).

